

## Appendix 12 – Images of the site and proposed scheme



The site in red, the Cannon Road area in yellow and the Goods Yard site in blue

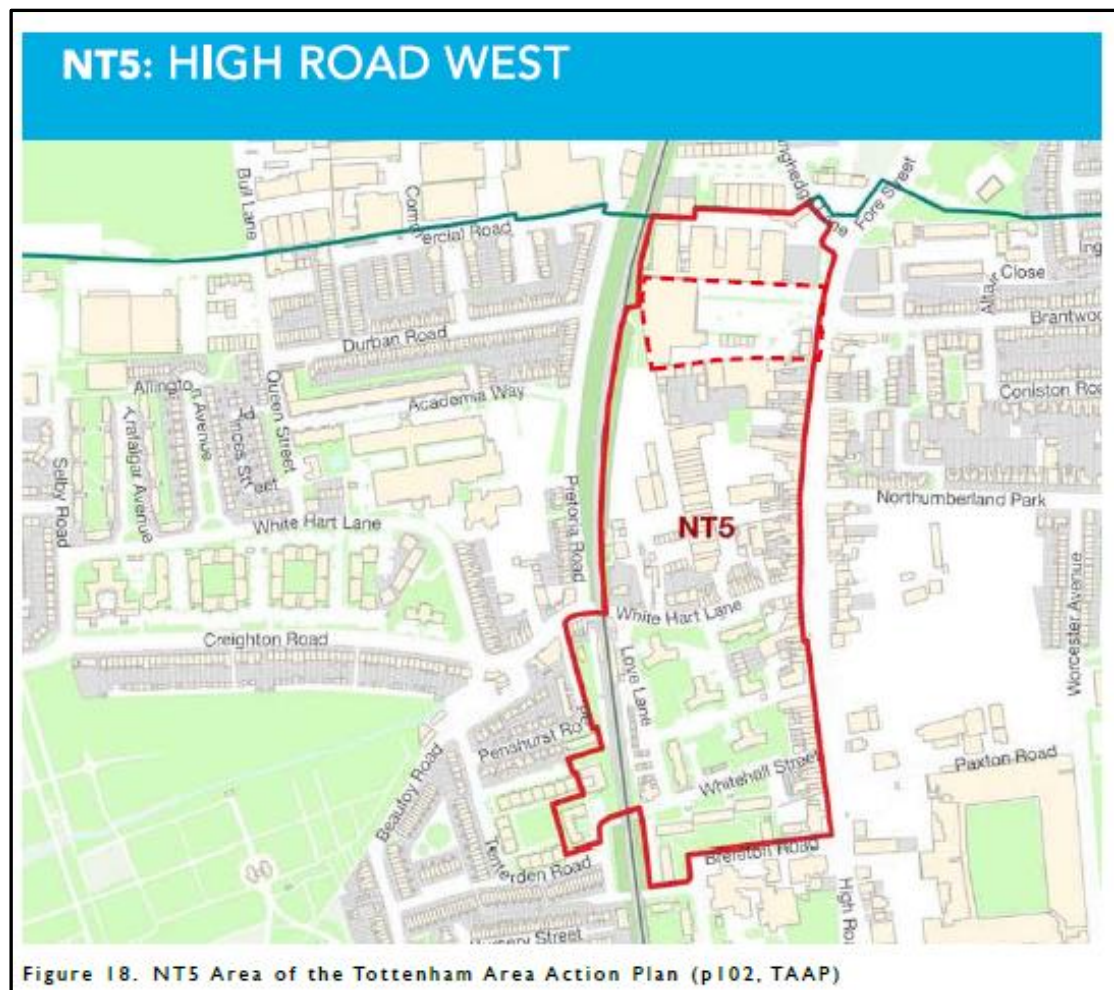
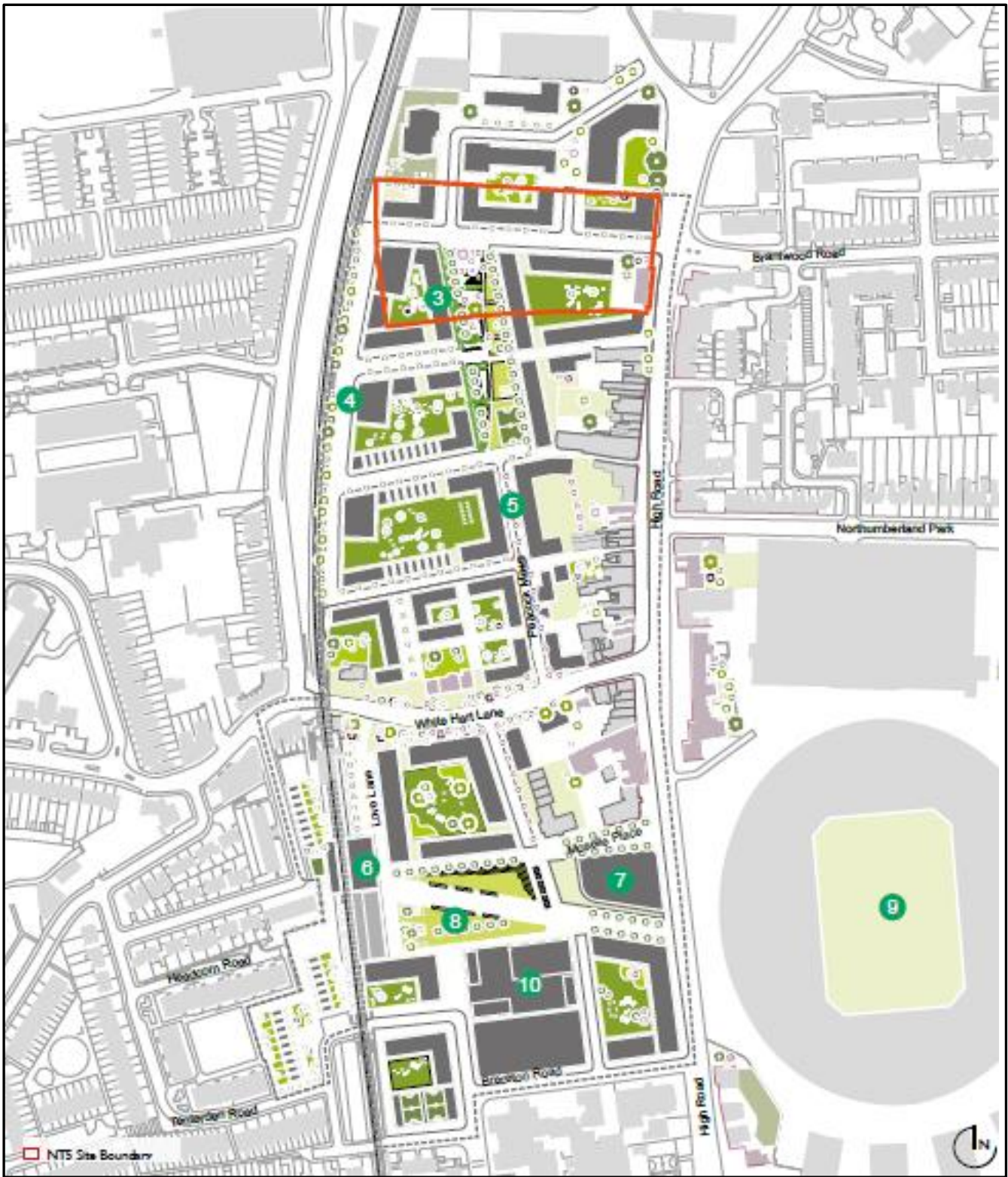
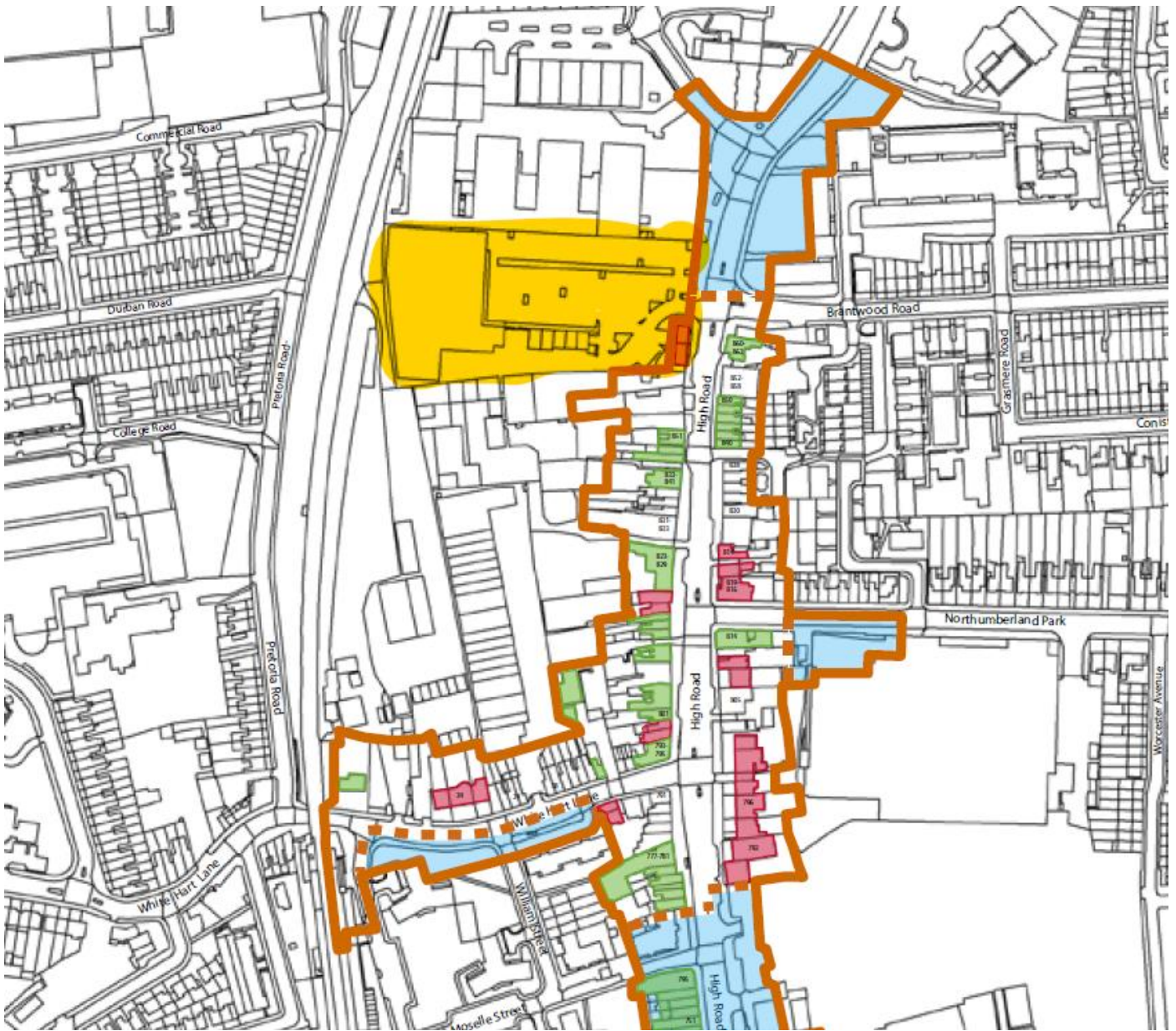


Figure 18. NT5 Area of the Tottenham Area Action Plan (p102, TAAP)

The site (red dashed line) as part of Site Allocation NT5



The site (red line) in the High Road West Masterplan Framework Area



**Nos. 867 & 869 are Listed (Grade II) and within the North Tottenham Conservation Area (whereas the majority of the site, in yellow, is outside the Conservation Area). N.B. The Conservation Area has been amended to exclude the blue areas.**



**Nos. 867-879 High Road (Listed)**



**Existing trees near the High Road**



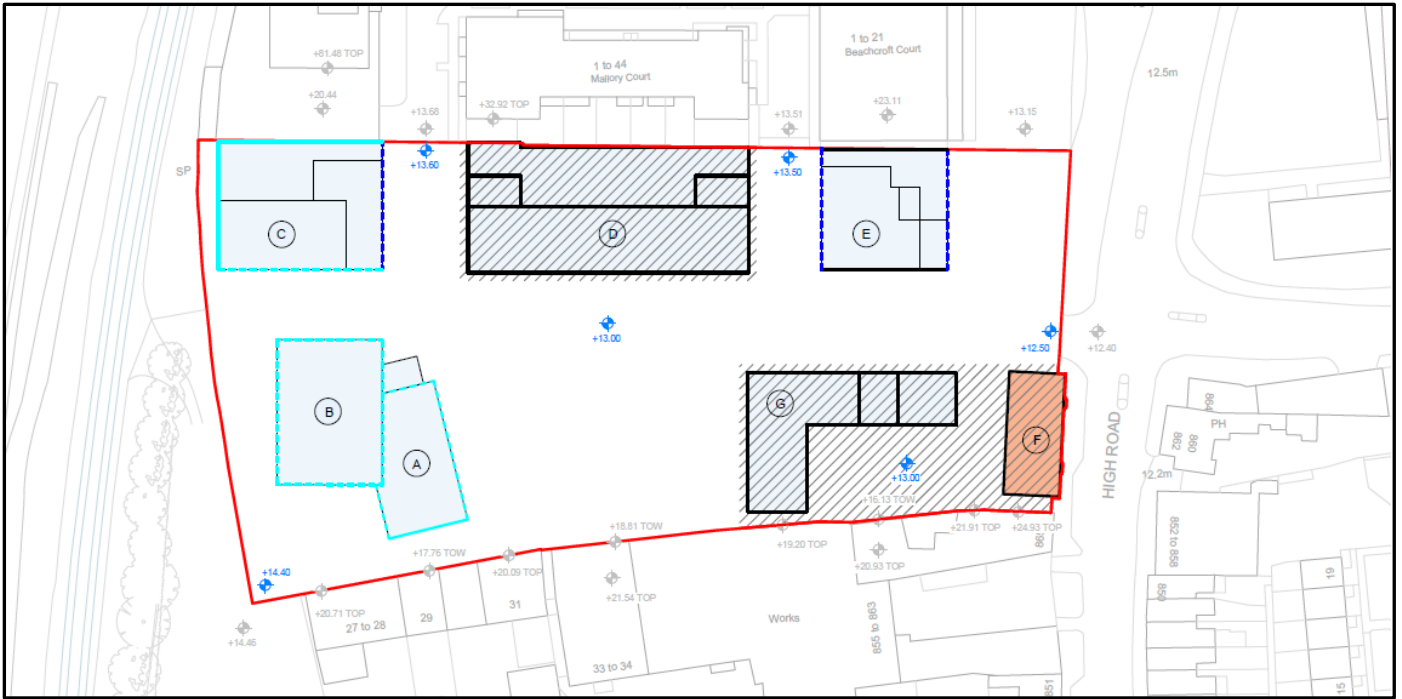
**Existing B&M Store**



**Mallory Court & Beachcroft Court**



**From the High Road – Rivers Apartments, Mallory Court & Beachcroft Court**



**Parameter Plan 03- Blocks A- F (the hatched Blocks are in Detail)**



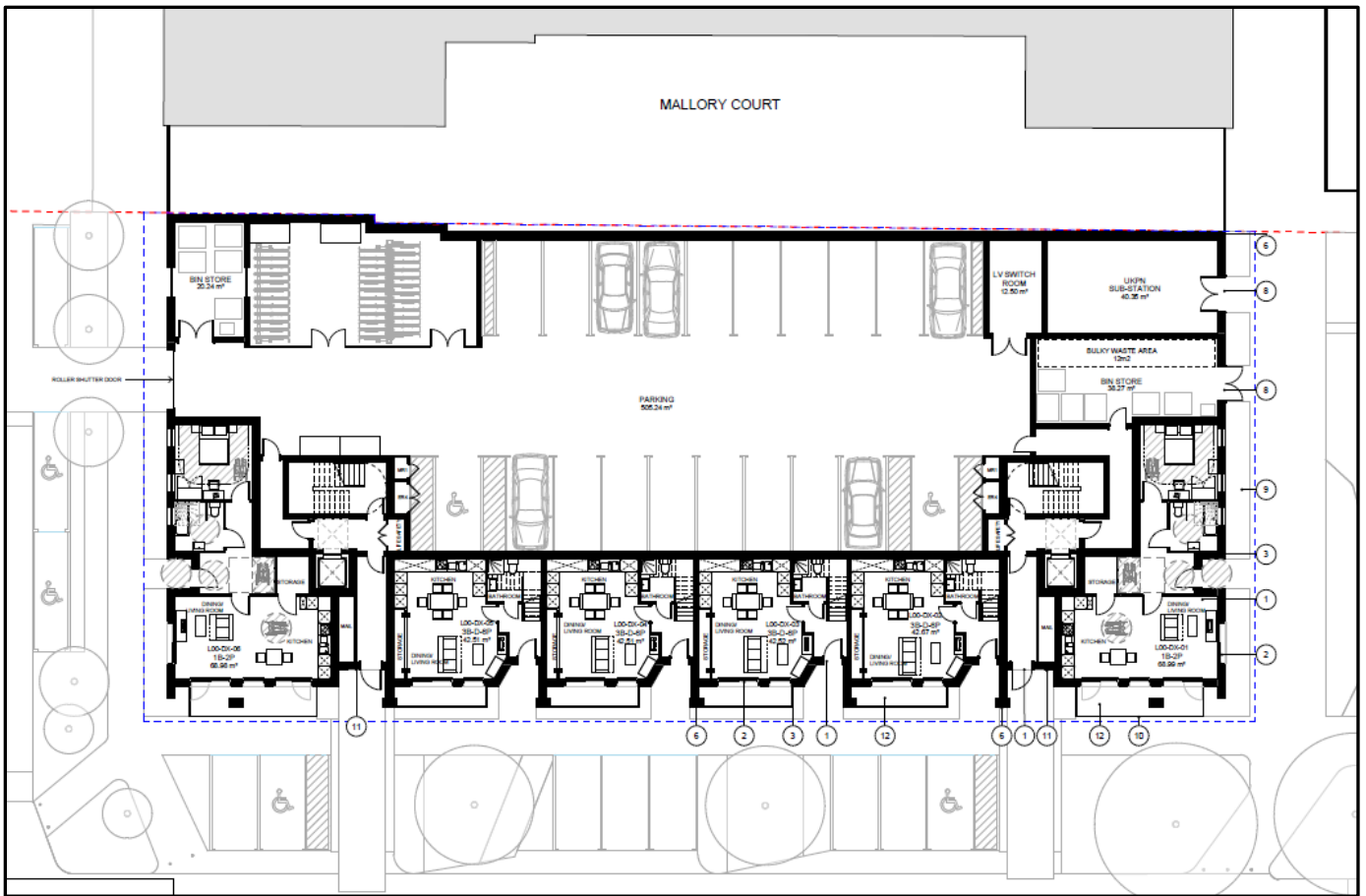
**Illustrative overview of the proposed scheme (from south east - above the High Road)**



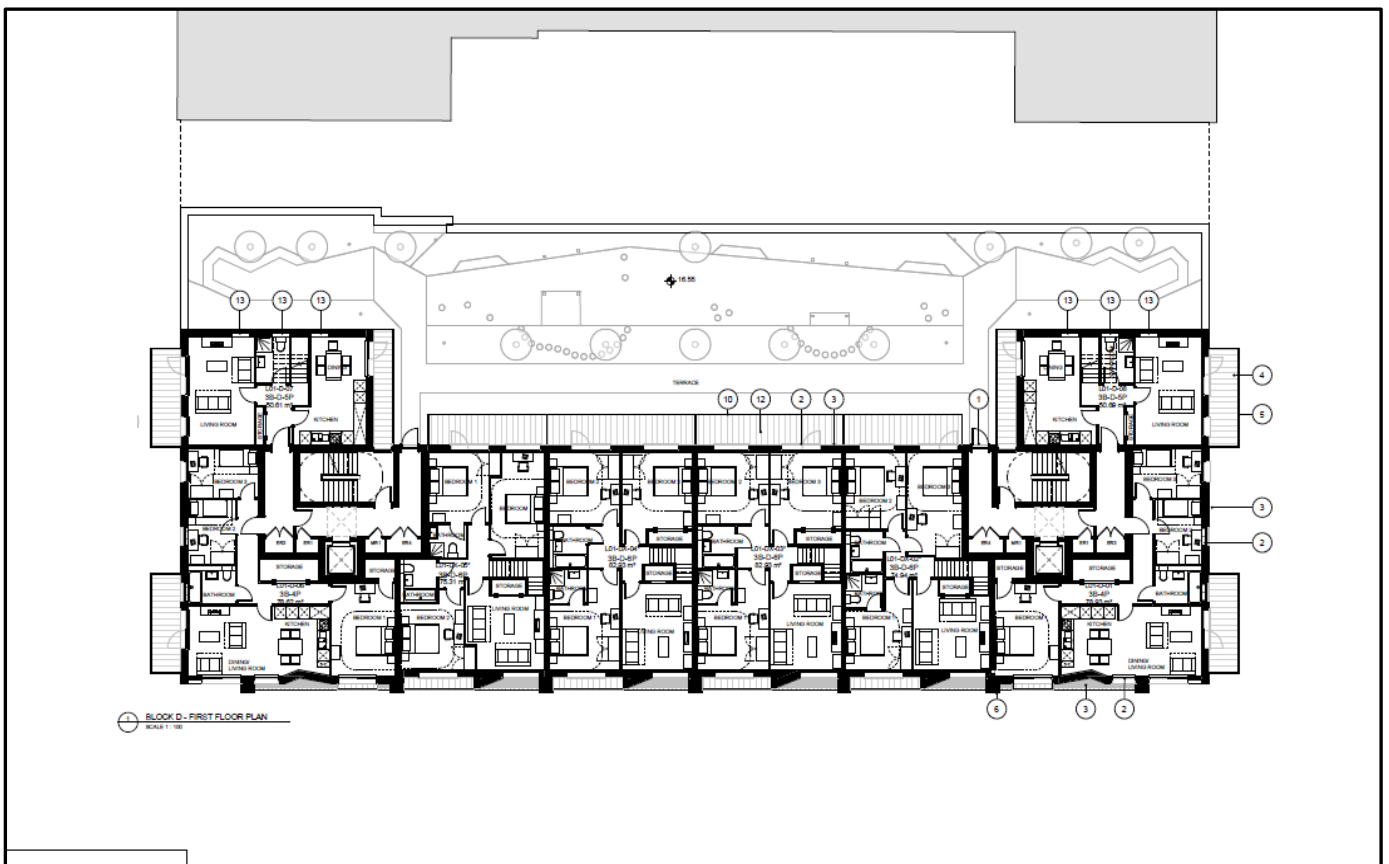
**Illustrative overview of the proposed scheme (from north west)**



**Illustrative landscaping scheme**



**Block D Ground Floor Plan (Detailed element)**



**Block D First Floor Plan (Detailed element)**

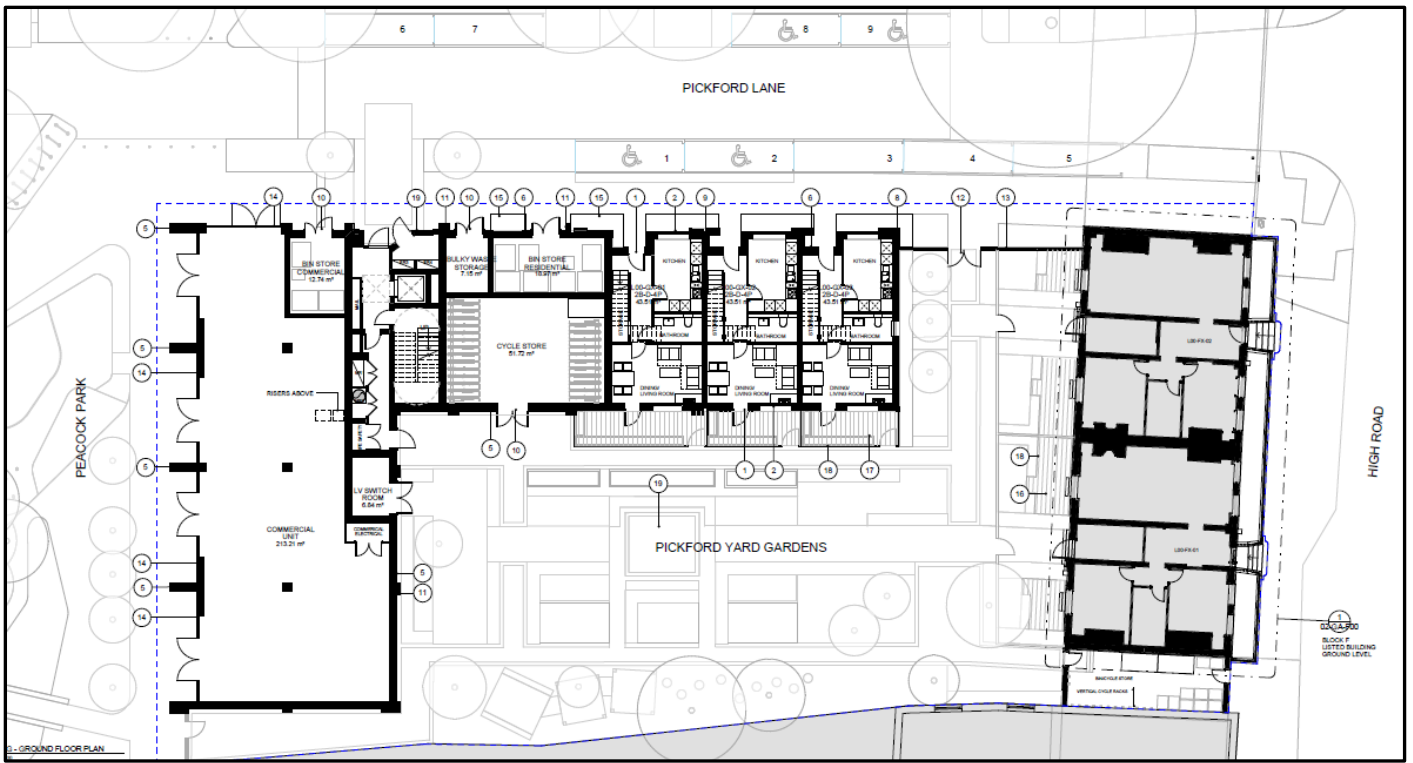


**Block D northern elevation (Detailed element)**

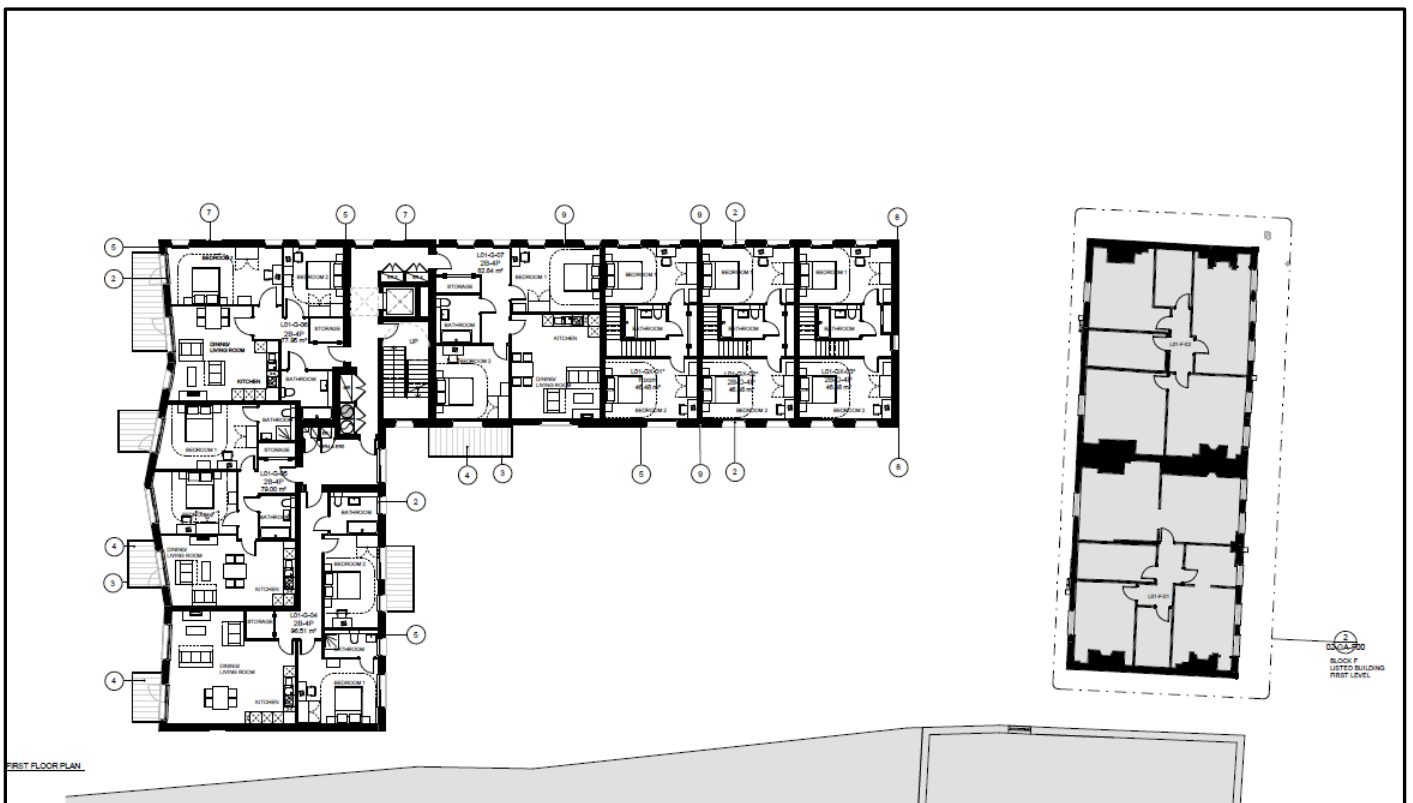


**Block D southern elevation CGI (Detailed element)**





**Blocks G and F Ground Floor (Detailed element)**



**Blocks G and F First Floor (Detailed element)**



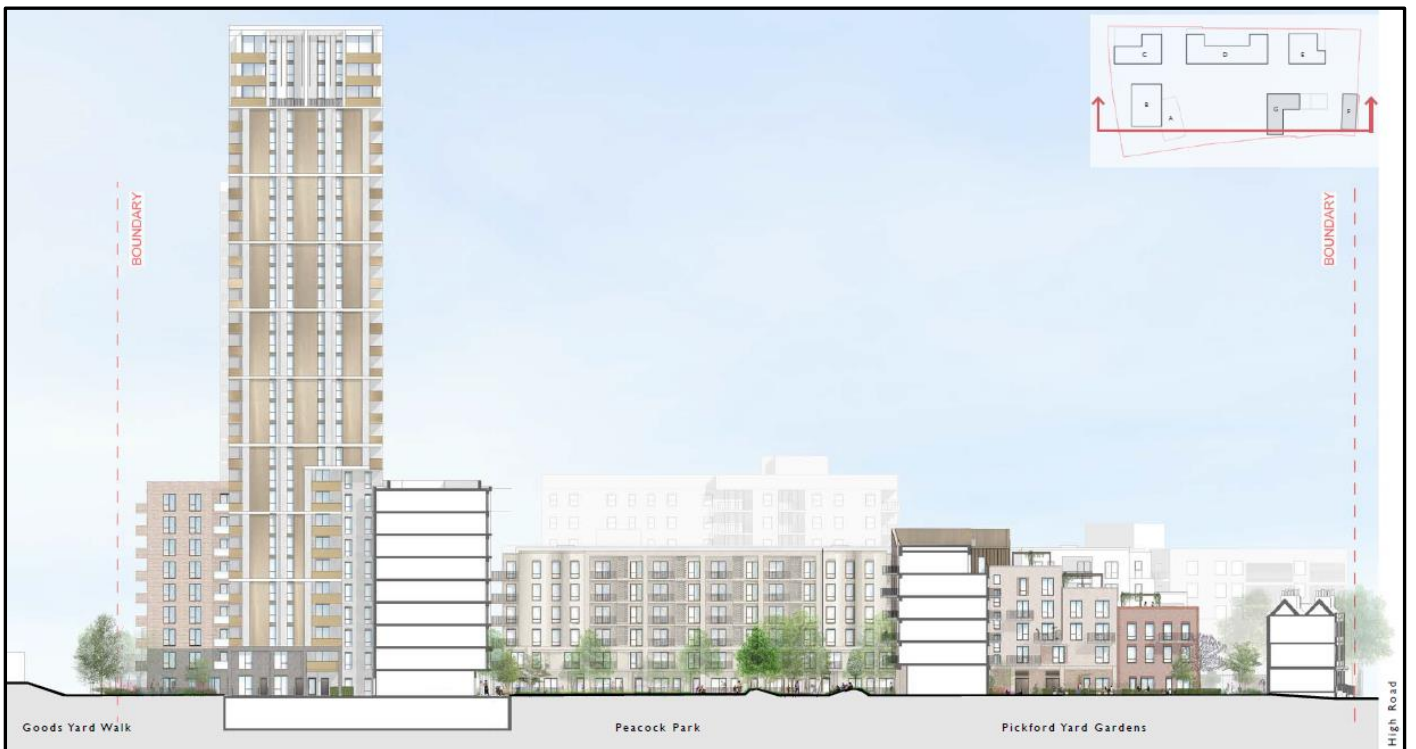
**Blocks F and G northern elevation (Detailed element)**



**Block G western elevation CGI (Detailed element)**



**CGI from the High Road looking along proposed Pickford Lane. From left to right: Blocks F & Block G (in Detail), Block B tower (in Outline), Block D (in Detail) and Block E and Brook House Yard (in Outline)**



**Illustrative scheme – south section (Detailed and Outline elements)**



**Illustrative scheme northern elevation (Detailed and Outline elements)**



**Illustrative scheme – eastern elevation Blocks A & (Outline elements)**